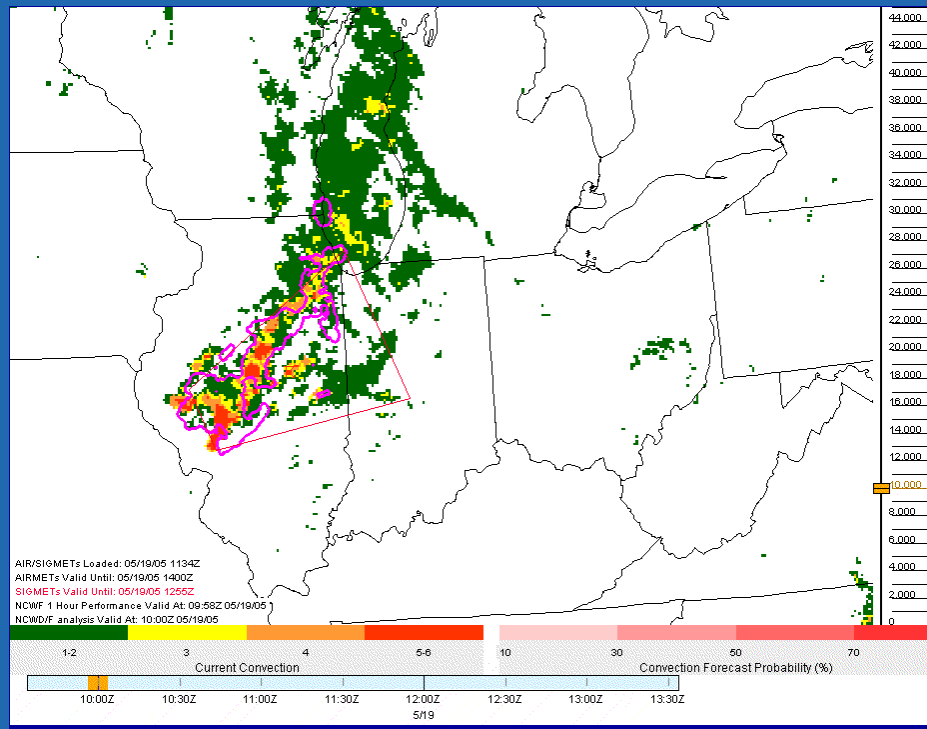


National Convective Weather Forecast (NCWF)

NCWF-2

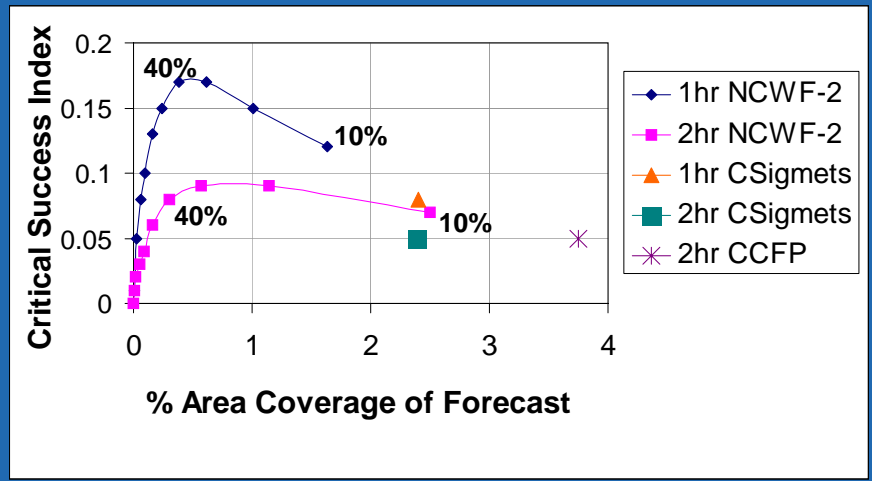
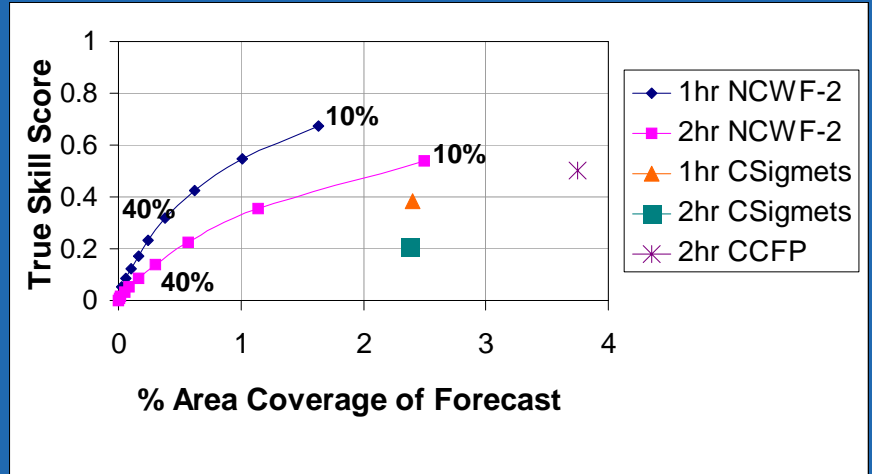
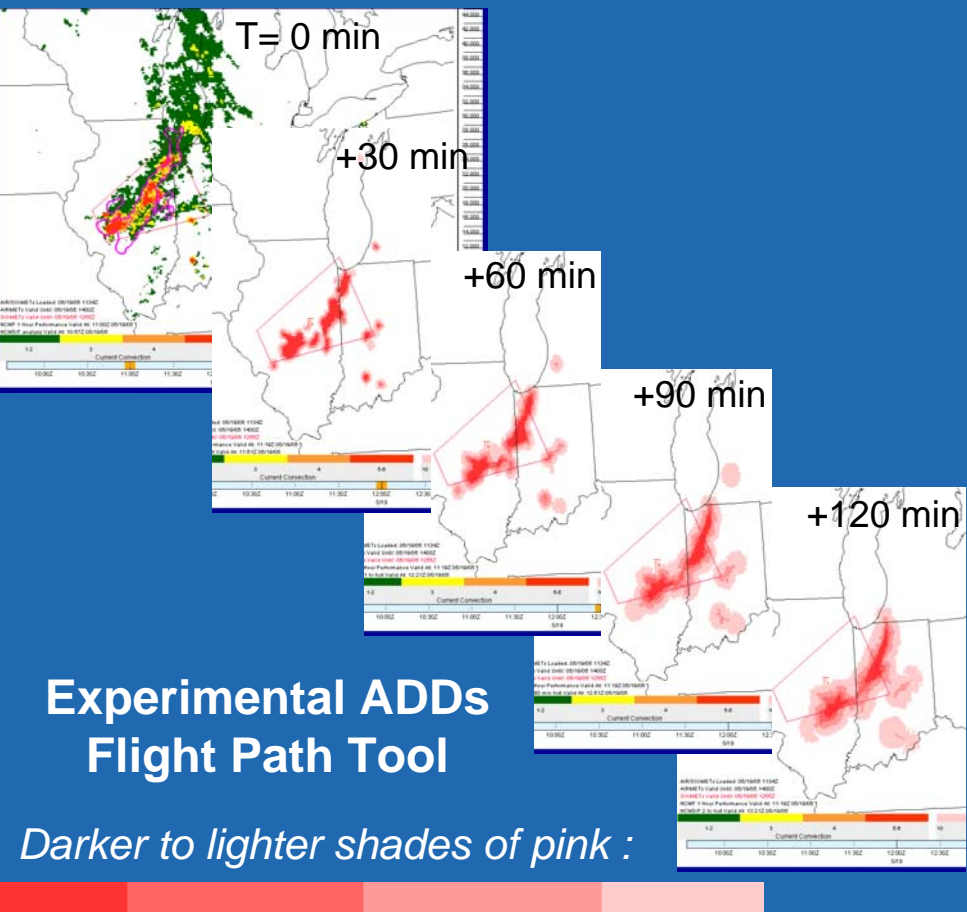
- Currently available on Experimental ADDs
- Operational in '07 replacing NCWF-1
- Automated graphical display
- User-requested 0-2-hour probabilities
- 4 km resolution with updates every 5 minutes at 30 minute increments.
- This product is intended for strategic use by dispatchers, AOCs, and pilots (pre-flight and cockpit).



Experimental ADDs
Flight Path Tool

National Convective Weather Forecast – 2hr

RTVS Verification

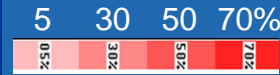
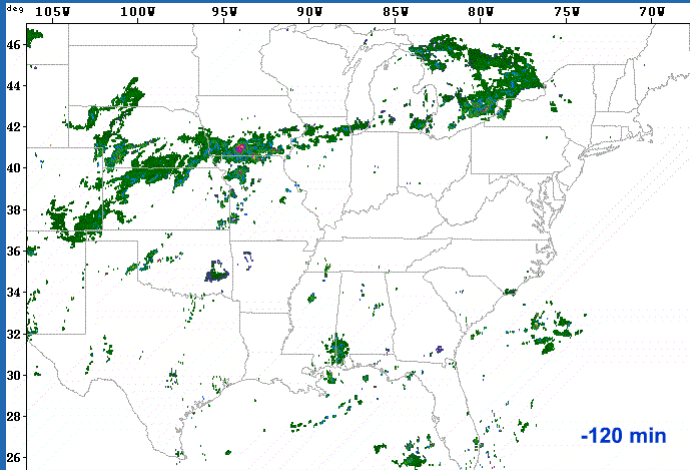


**Validation Observation:
4km NCWD
April 1 to Oct 1, 2005**



NCWF-6: Blends Observation and Model Forecasts

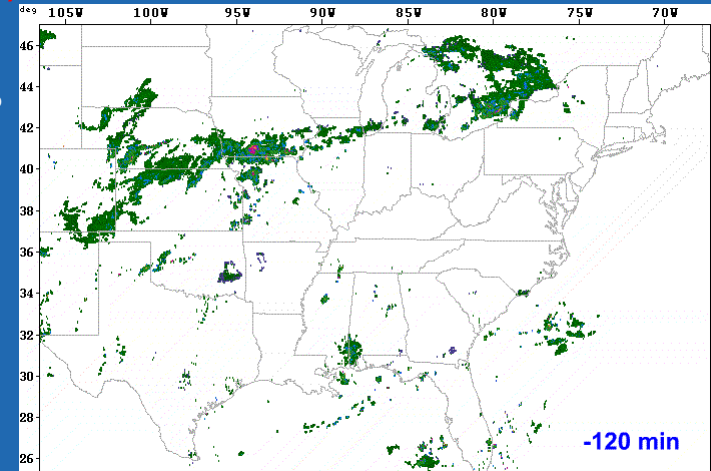
(1) Observation-based



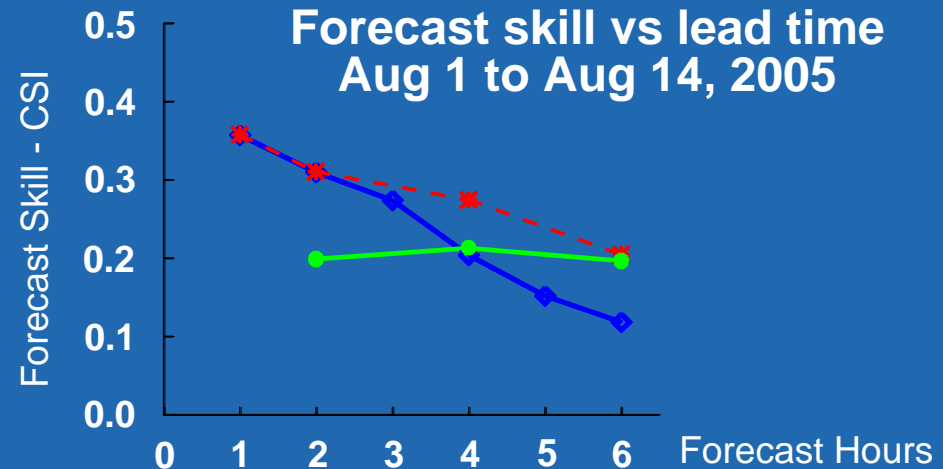
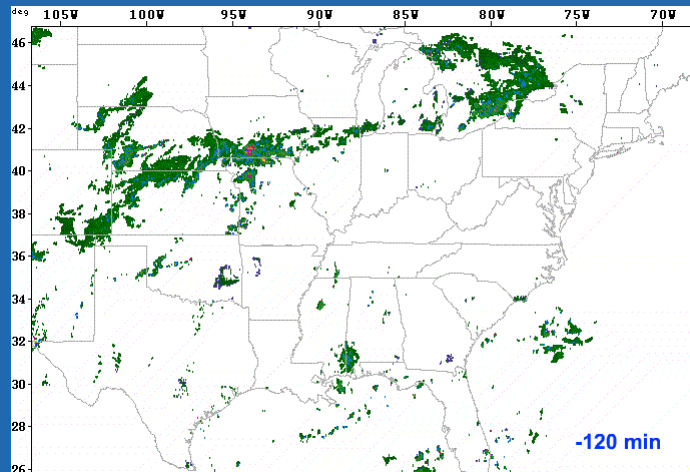
Forecast Probabilities

Verification

(3) NCWF-6 Blended forecast

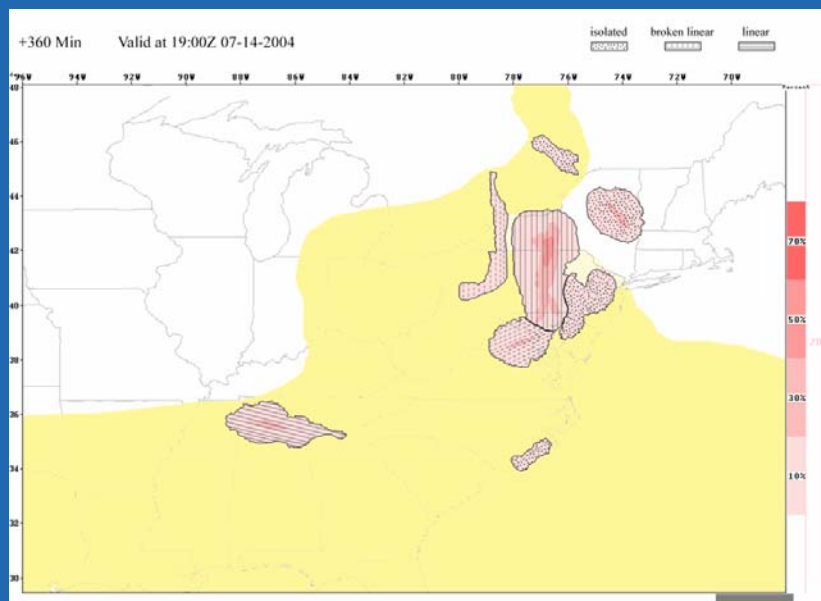


(2) NWP-based



National Convective Weather Forecast - 6hr

- 1-6 hour probabilistic forecast blends RUC and NCWF
- Complimentary
 - **Initiation**
 - RUC: good
 - NCWF: not handled
 - **Motion**
 - RUC: improves with lead time
 - NCWF: degrades with lead time
 - **Dissipation based on diurnal climatology**
- Available as a test version next summer,
- **Experimental ADDs in 2007**
 - Operational in 2010 replaces NCWF-2



Darker to lighter shades of pink :



Higher to lower Probabilities



Texture – convective organization and orientation – line, broken line, scattered

Yellow areas forecast regions of echo tops over 30,000 ft