

# **Measuring Actual and Forecast Weather Impact on the NAS**

**A. Klein**

*September 2007*

---

# Weather Impacted Traffic Index (WITI)

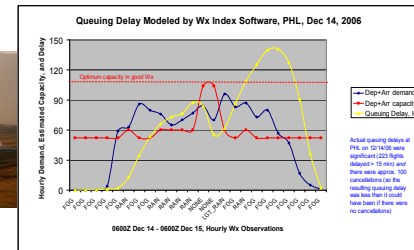
*Quantifies "the hand the NAS was dealt today"*

WITI is a weighted sum of three components:

- **En-route Component** reflecting impact of convective weather on routes to/from major airports
- **Terminal Component** for major airports: local weather impact
- **Queuing Delay Component** for same airports reflecting excess traffic demand vs. capacity



**Weather is weighted by traffic**

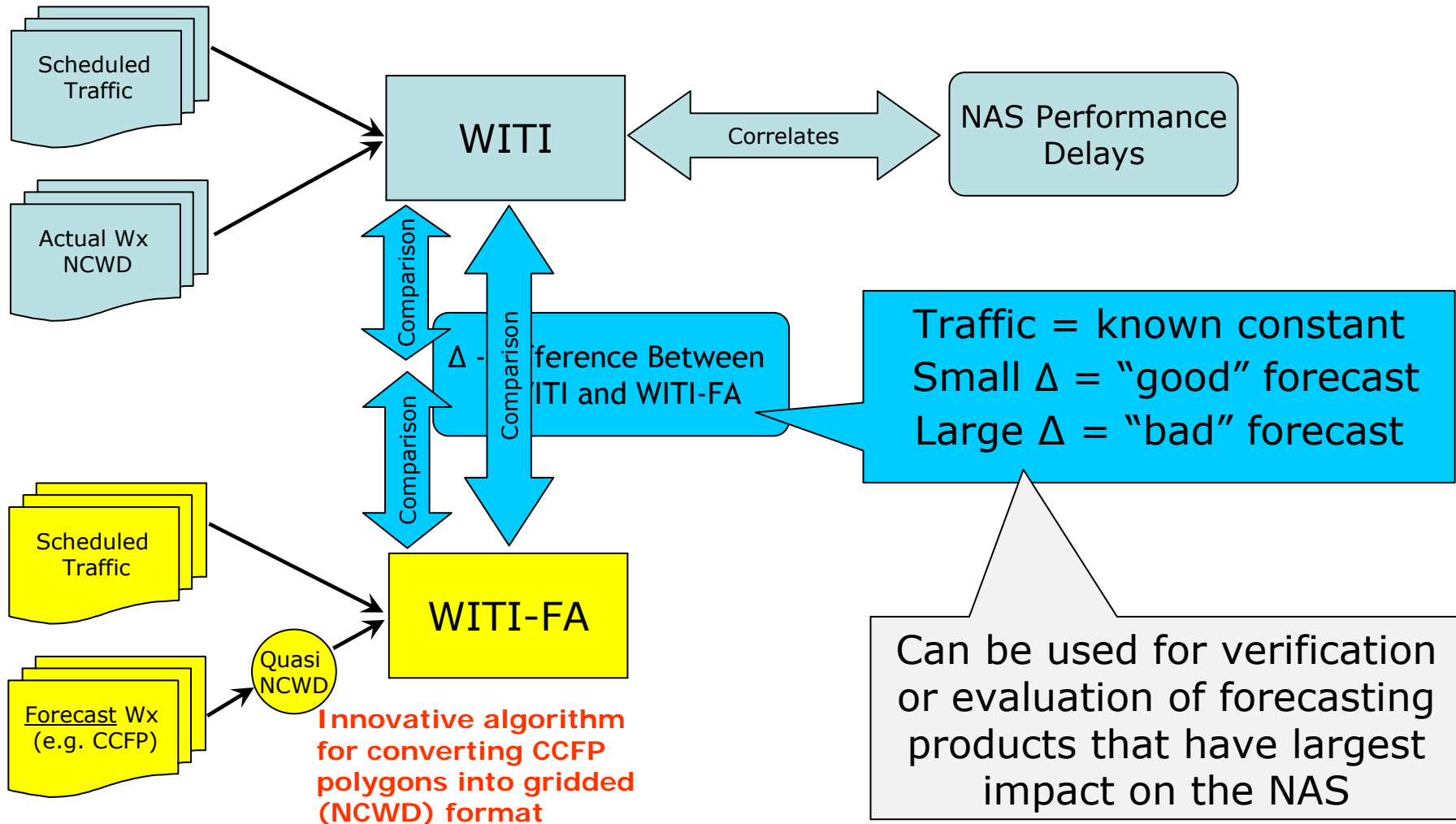


Used by the FAA on a regular basis:

- Measure system performance in an objective manner
- Compare different seasons' Wx/traffic impact with outcomes (e.g. delays)

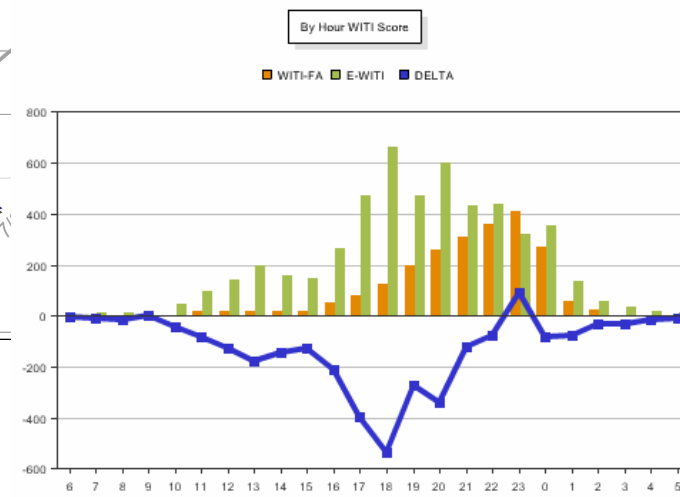
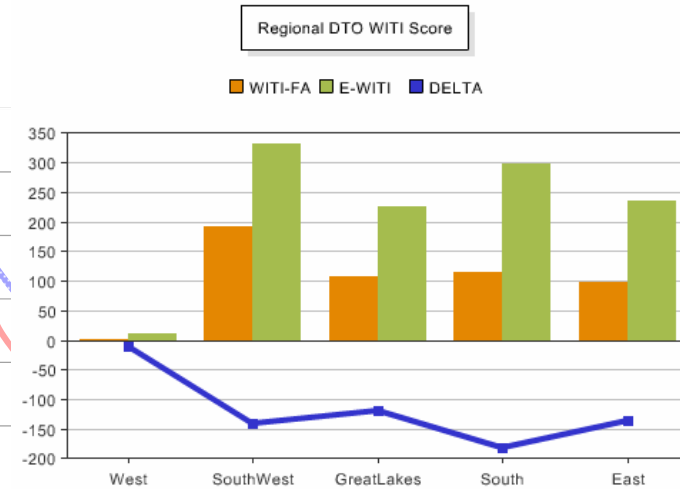
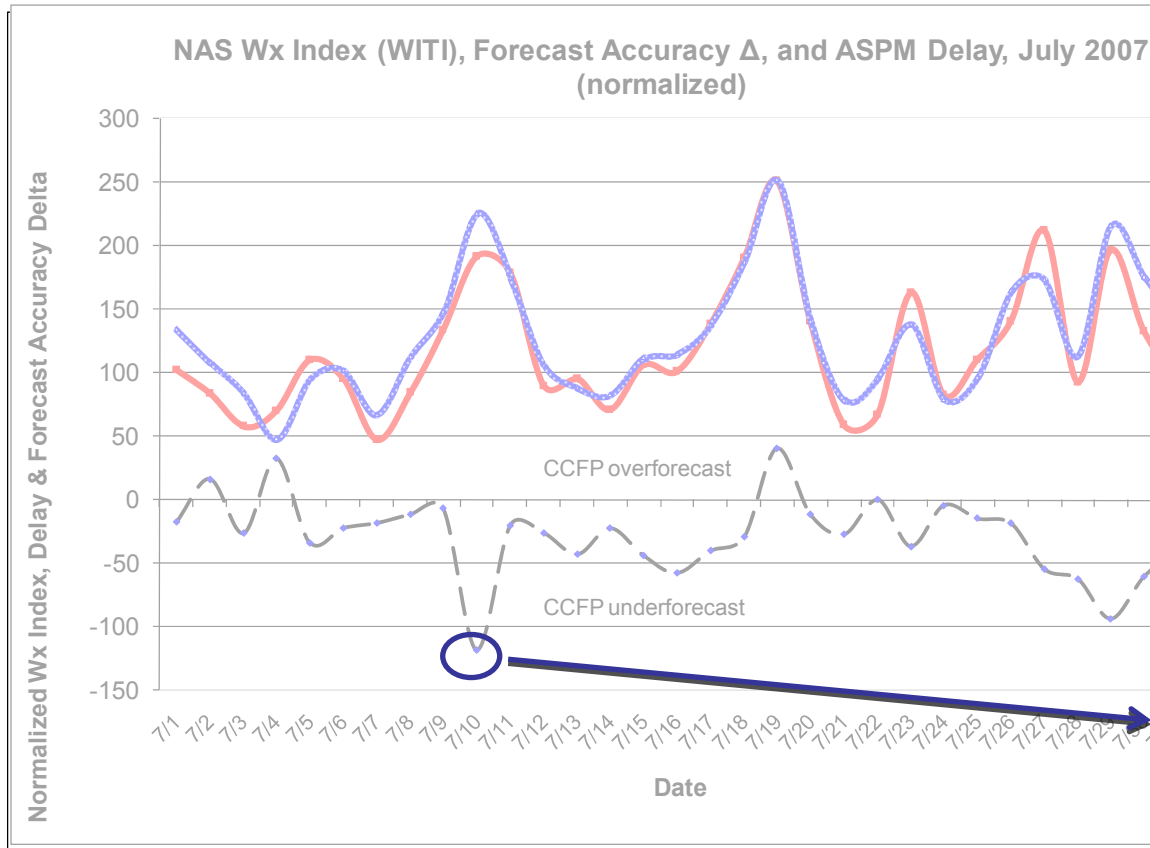
# From WITI to WITI-FA

*Impact of actual Wx vs. Perceived impact of forecast Wx*



# WITI vs. WITI-FA Analysis

## Example: July 2007



Website charts by AvMet, LLC