
Ceiling and Visibility

National Scale

Marcia Politovich, NCAR
for
Paul Herzegh, NCAR



Photo Credit: AOPA Air Safety Foundation



Overview of National-Scale C&V Grids

	Diagnosis	Forecast
CONUS Grids	Operational decision due Qtr 1-2 FY08	Experimental decision due Qtr 4 FY08
HEMS Display	Operational support uncertain	Not planned
Alaska Grids	On hold	On hold

... more on these three topics

	Diagnosis	Forecast
CONUS Grids	Operational decision due Qtr 1-2 FY08	Experimental decision due Qtr 4 FY08
HEMS Display	Operational support uncertain	

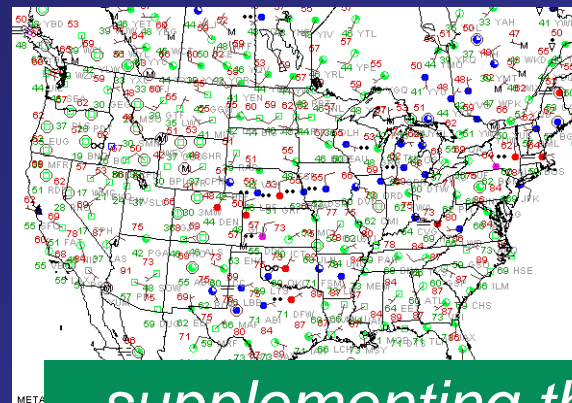
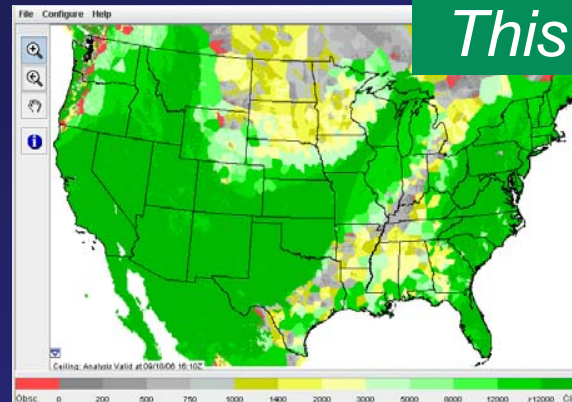
Status: CONUS Diagnosis

CONUS
Diagnosis

Operational
decision
Qtr 1-2 FY08

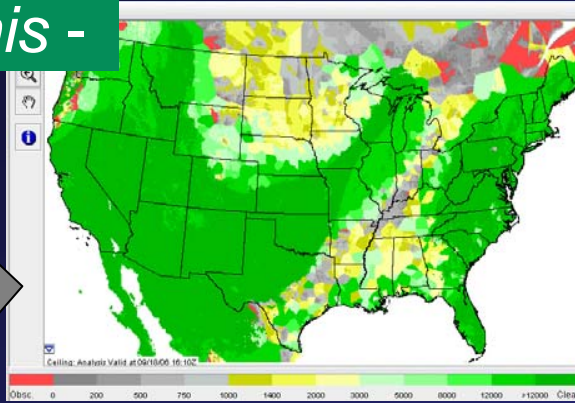
Features

- Automated C, V, Flt Cat.
- Inputs: METARS, satellite
- 5-min update, 5-km grid
- Output: ADDS + GRIB files
- Confidence & other overlays



Status: CONUS Forecast

This -



Persistence

RUC

SREF

LAMP

Ruleset

Statistical
Methods

MOS

NAM

Other

- *integrating these*

Experimental
decision
Qtr 4 FY08

CONUS
Forecast

Features

- Hourly update, 2-10 h fcst.
- 5-km grid
- Agile selection of inputs
- Algorithm in test/revise stage
- Operational in FY10

Status: HEMS Regional Display

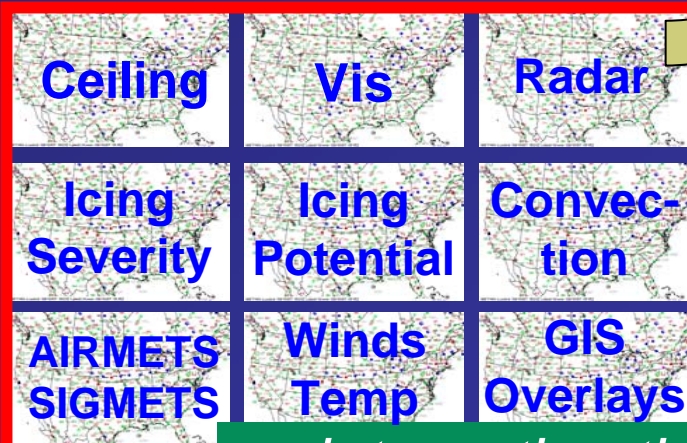
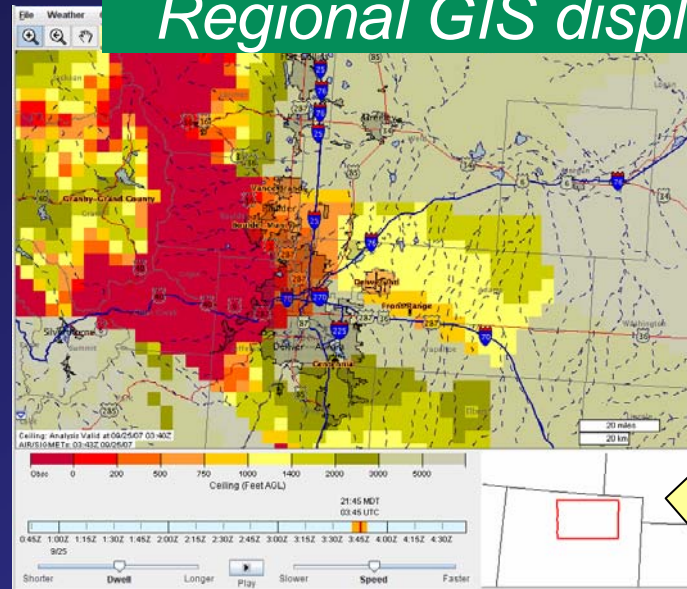
HEMS
Display

Operational
support
uncertain

Features


- Tailored for helicopter EMS
- Accessible thru Exp'l ADDS
- Approved for 'no-go' decisions only
- Surface to 5000' agl
- 5-km grid, 5-min update

Regional GIS display -



- integrating these

Summary: C&V Product Milestones

	FY08	FY09	FY10
CONUS Analysis	Op'l Qtr 1-2	OPS	OPS
CONUS Forecast	Exp'l Qtr 4		Op'l Qtr 4
HEMS	Status TBD	?	?
Alaska Products	Development Priority TBD		