



Earth System Research Laboratory

SCIENCE, SERVICE & STEWARDSHIP

Probabilistic Storm Forecasting for Traffic Flow Management: Progress and Challenges

Stephen S. Weygandt

NOAA Earth System Research Laboratory

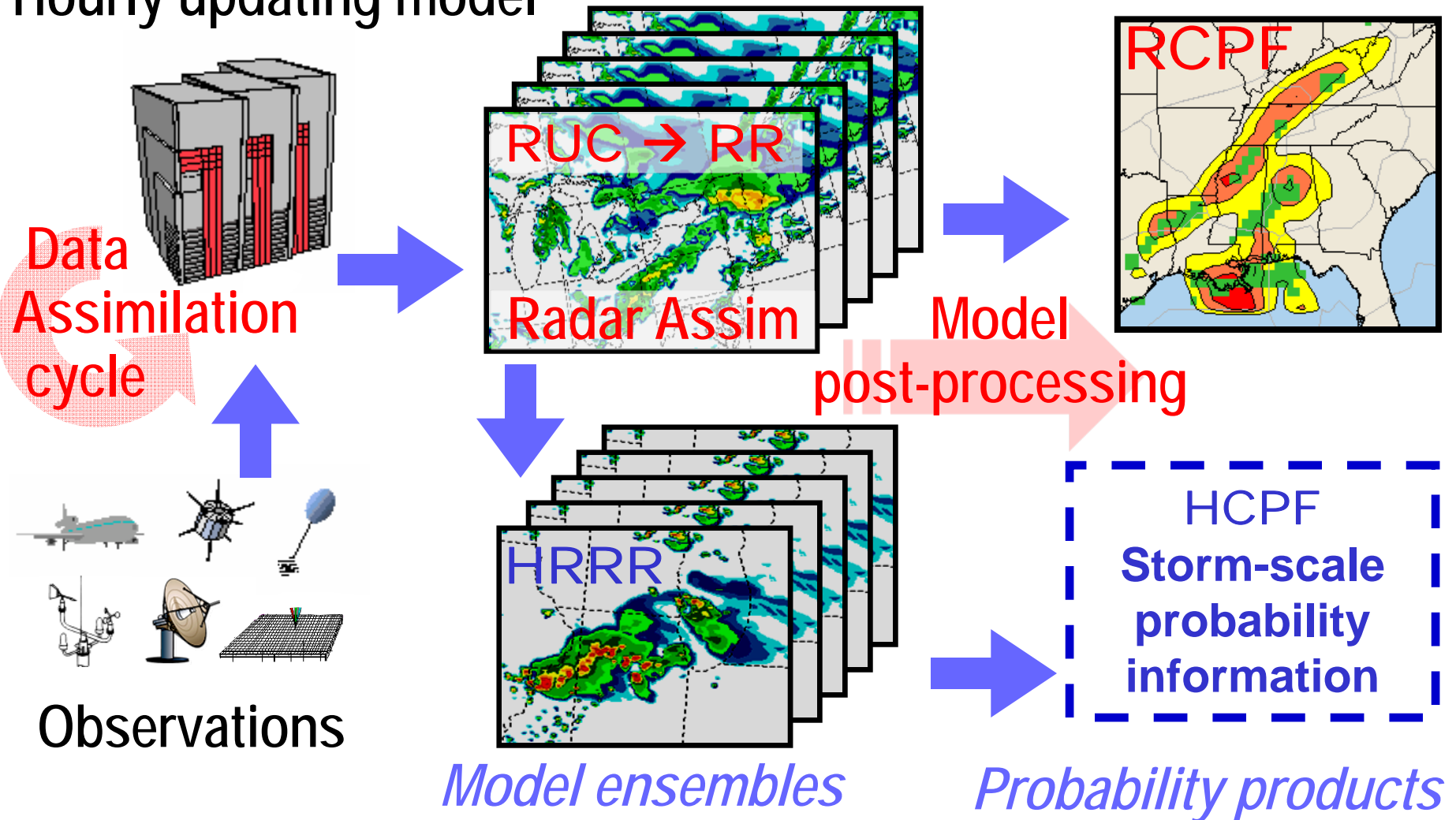
Friends and Partners of Aviation Weather

NBAA Convention, October 9, 2008



Model-based storm guidance

Hourly updating model



Mesoscale model guidance

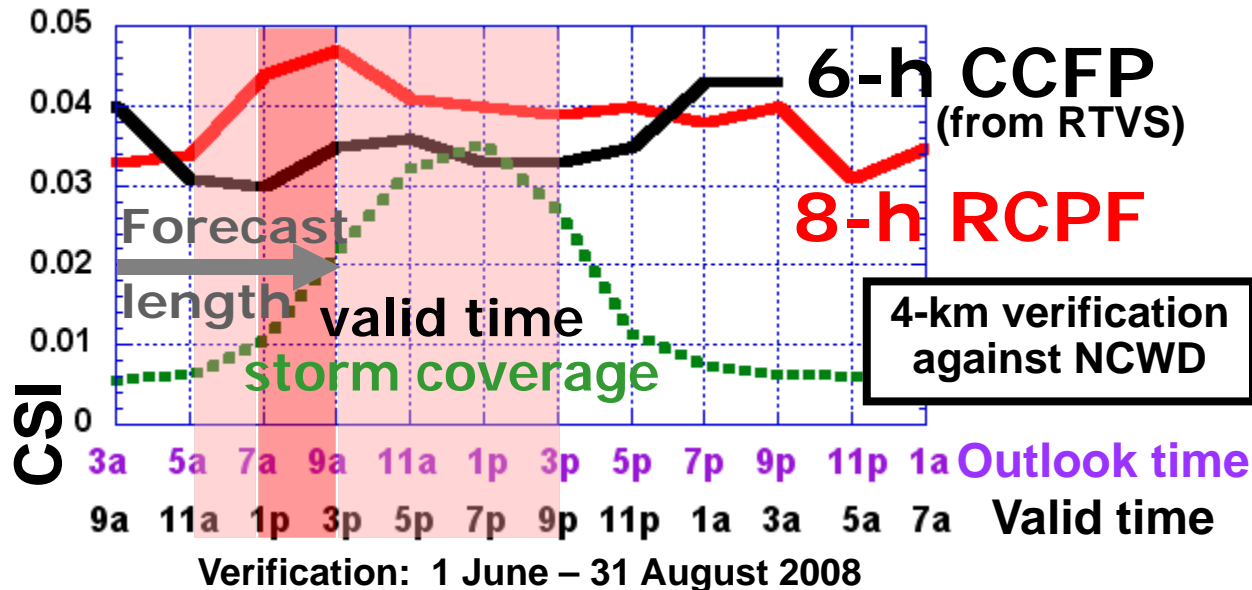
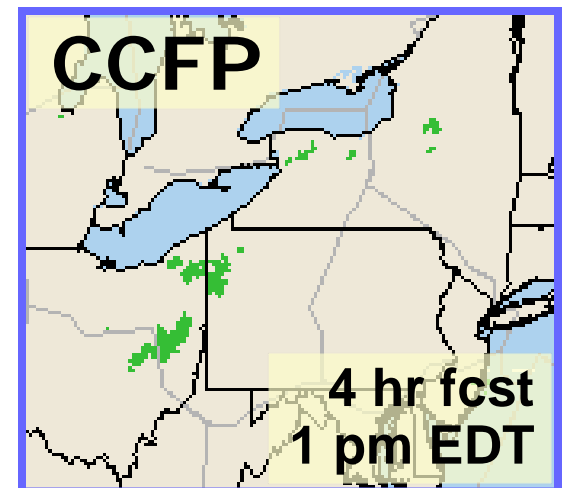
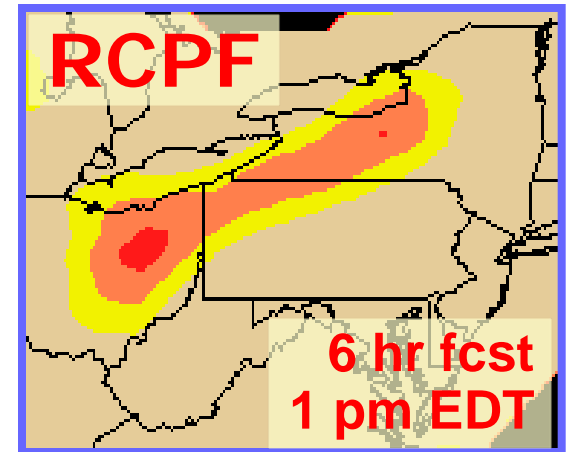
13-km RUC & Rapid Refresh

Hourly update cycle gives accurate mesoscale environment, good convective initiation

RCPF (hourly 3-10 h outlook) made from time-lagged ensemble of RUC

RCPF used as guidance for CCFP

20 July 2008
9 am outlook



Mesoscale model guidance

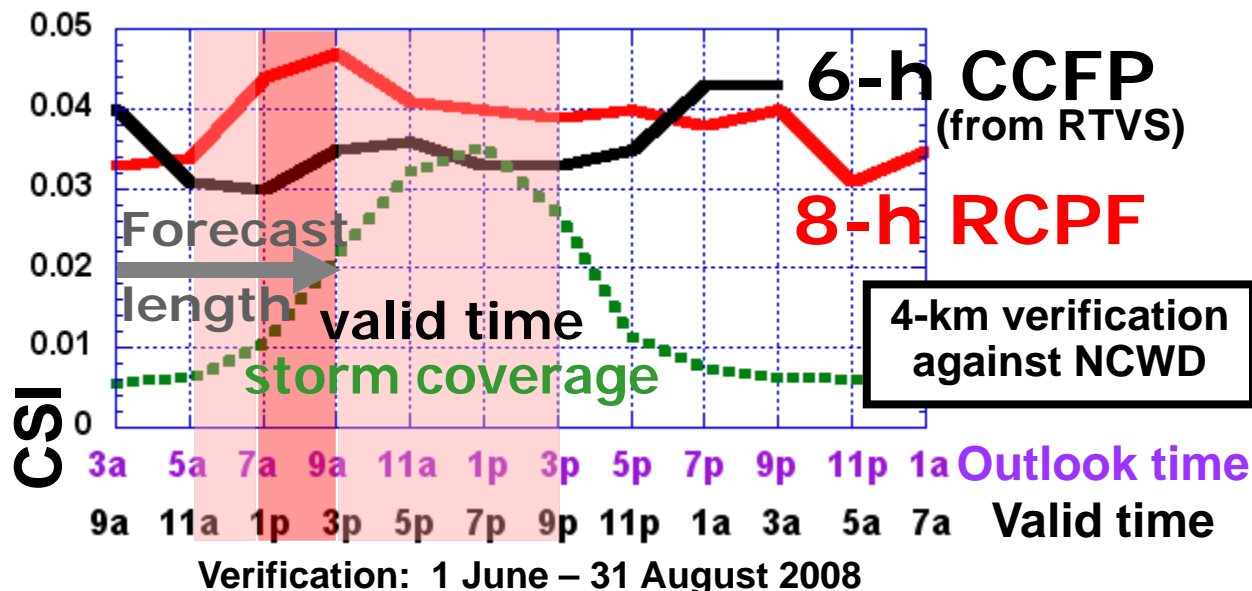
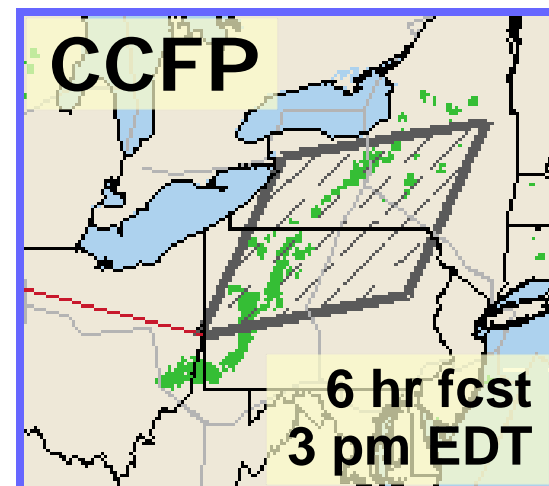
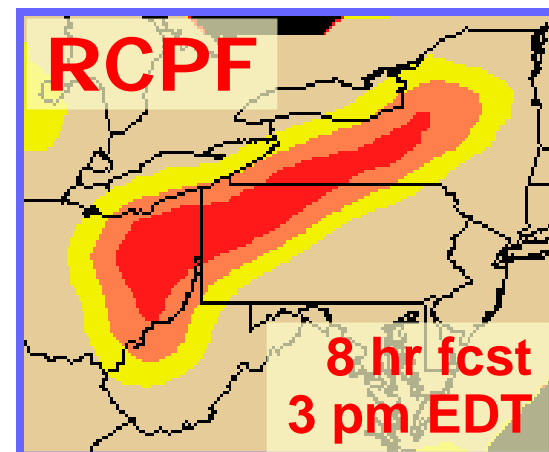
13-km RUC & Rapid Refresh

Hourly update cycle gives accurate mesoscale environment, good convective initiation

RCPF (hourly 3-10 h outlook) made from time-lagged ensemble of RUC

RCPF used as guidance for CCFP

20 July 2008
9 am outlook



Storm-scale model guidance

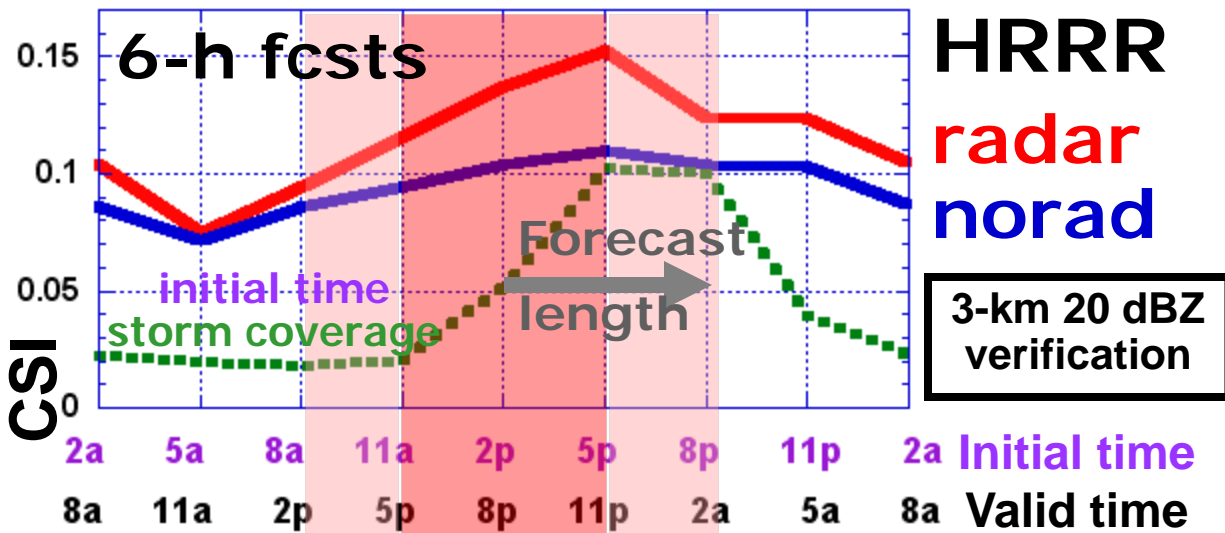
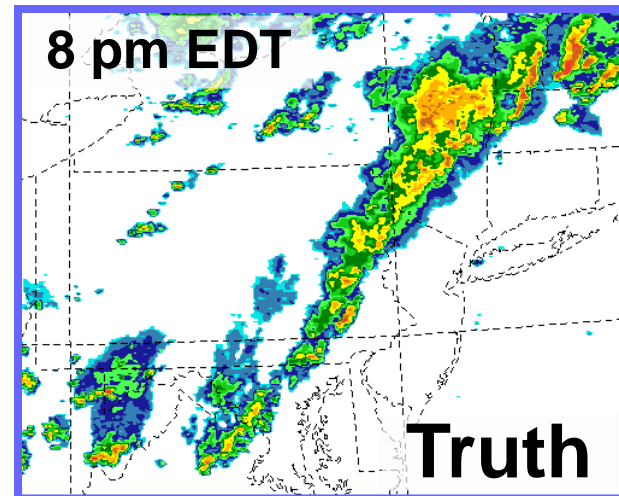
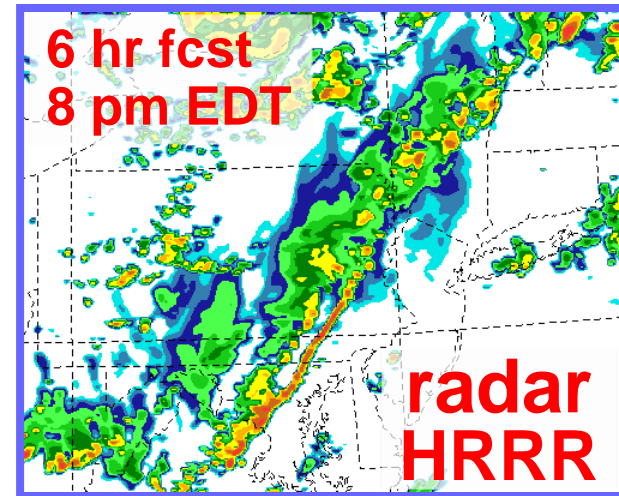
(3-km Hi-Res Rapid Refresh)

20 July 2008
2 pm initial time

High resolution needed for realistic storm structure (storm-types, gaps in lines, etc.)

Hourly 12-h forecast, 15-min VIL output

RUC radar assimilation improves HRRR



Verification: 1 June – 31 August 2008

Storm-scale model guidance

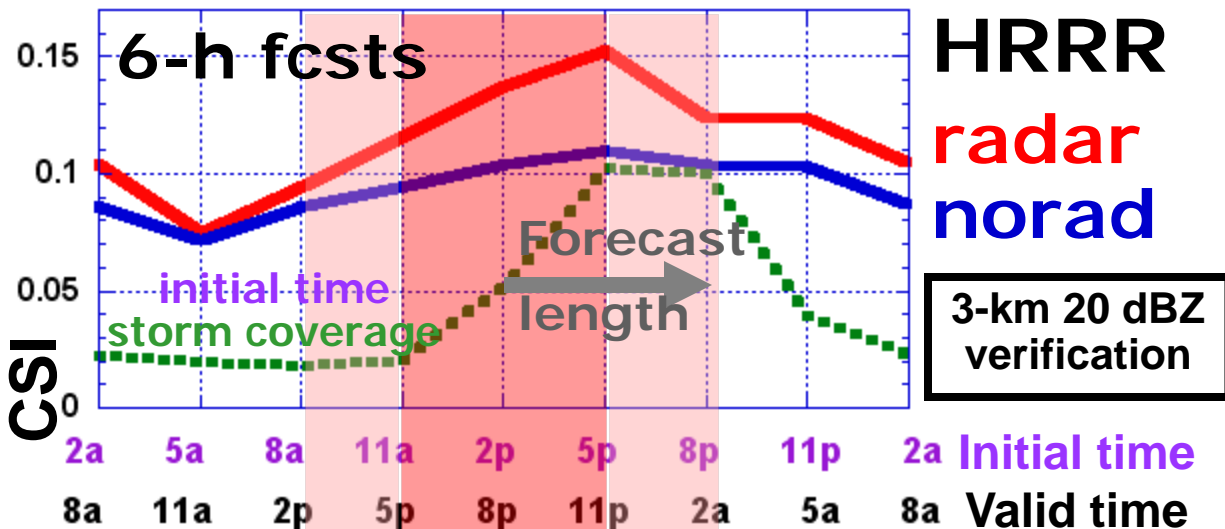
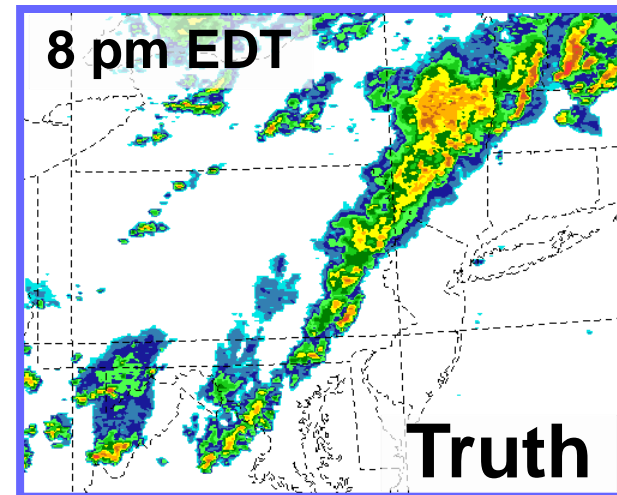
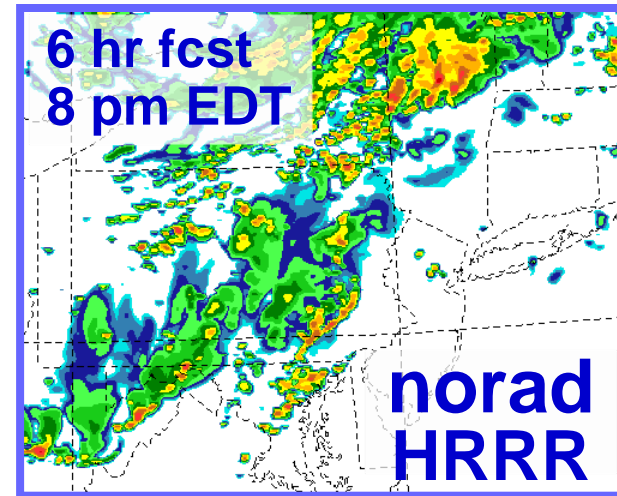
(3-km Hi-Res Rapid Refresh)

20 July 2008
2 pm initial time

High resolution needed for realistic storm structure (storm-types, gaps in lines, etc.)

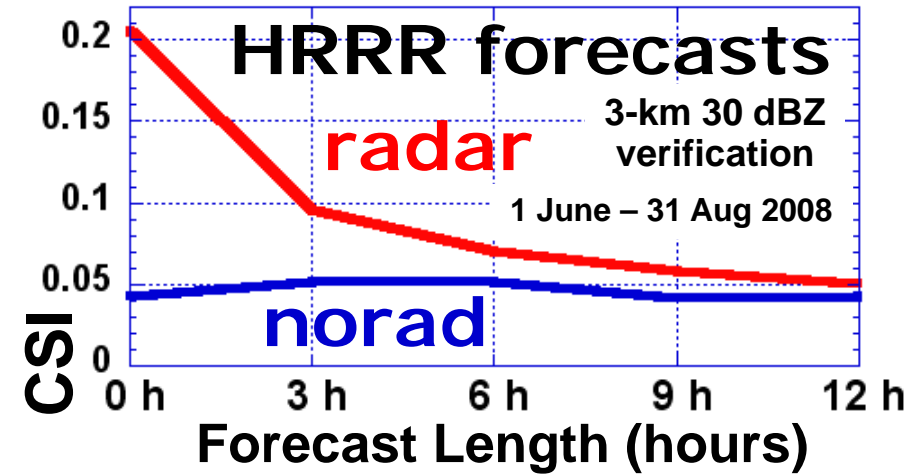
Hourly 12-h forecast, 15-min VIL output

RUC radar assimilation improves HRRR



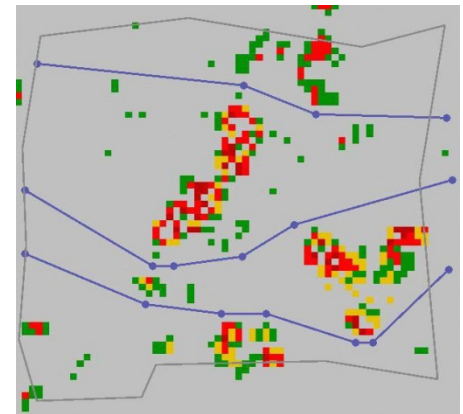
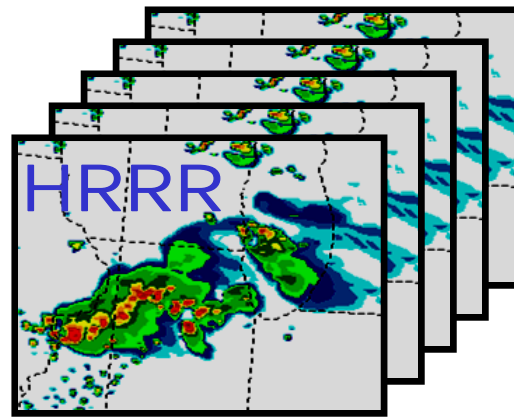
Verification: 1 June – 31 August 2008

Model-based TFM guidance



Radar assimilation improves HRRR forecast through 12-h
HRRR key component of CoSPA
HRRR storm structure allows extraction of ATM information

HRRR and HRRR-based probabilities Important for automated ATM



HRRR ensembles → ***ATM probabilities***