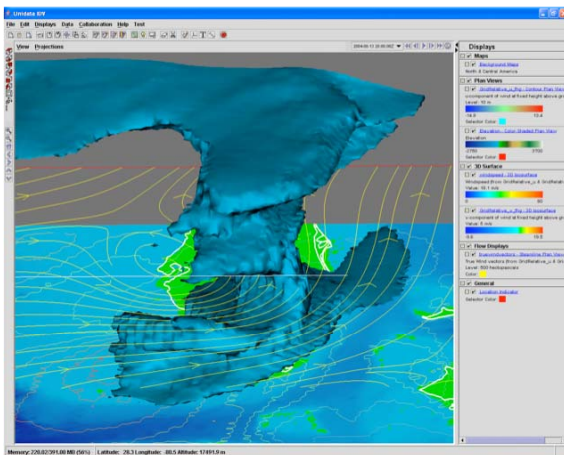


## Description

Unidata's Integrated Data Viewer (IDV) is a freely available, multiplatform visualization and analysis tool for interdisciplinary geoscience data. The IDV brings together the ability to display and work with a wide range of data including satellite imagery, gridded data, observations and radar data, all within a unified interface.

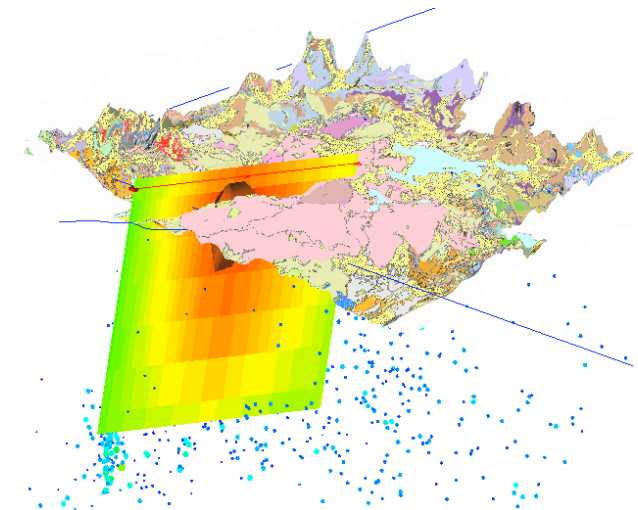
## IDV Features

- 2- and 3-D data displays
- Interactive probes for dataset exploration
  - Parameter readouts
  - Vertical profiles
  - Time/height displays
- A rich set of analysis capabilities
- Image product generation including Quick Time™ movies and GoogleEarth™ KML
- Extensible framework
- Bundling mechanism for saving state
- Client/server data access
- Easy configuration through the plugin facility
- Integrated documentation
- User support



## Who Uses the IDV

In addition to Unidata's traditional atmospheric science user base, the IDV attracts users from the oceanographic and solid earth sciences and is increasingly used as the visualization tool of choice during field projects.



## Supported Data Formats

- Access to data on ADDE, OPeNDAP and THREDDS servers
- Georeferenced netCDF data (CF, NUWG, WRF, IOAPI conventions)
- Common atmospheric formats (GRIB, satellite, radar)
- GIS data (shapefiles, DEM, WMS)
- GoogleEarth KML/KMZ
- Miscellaneous (Web Cam, HTML, Quick Time)