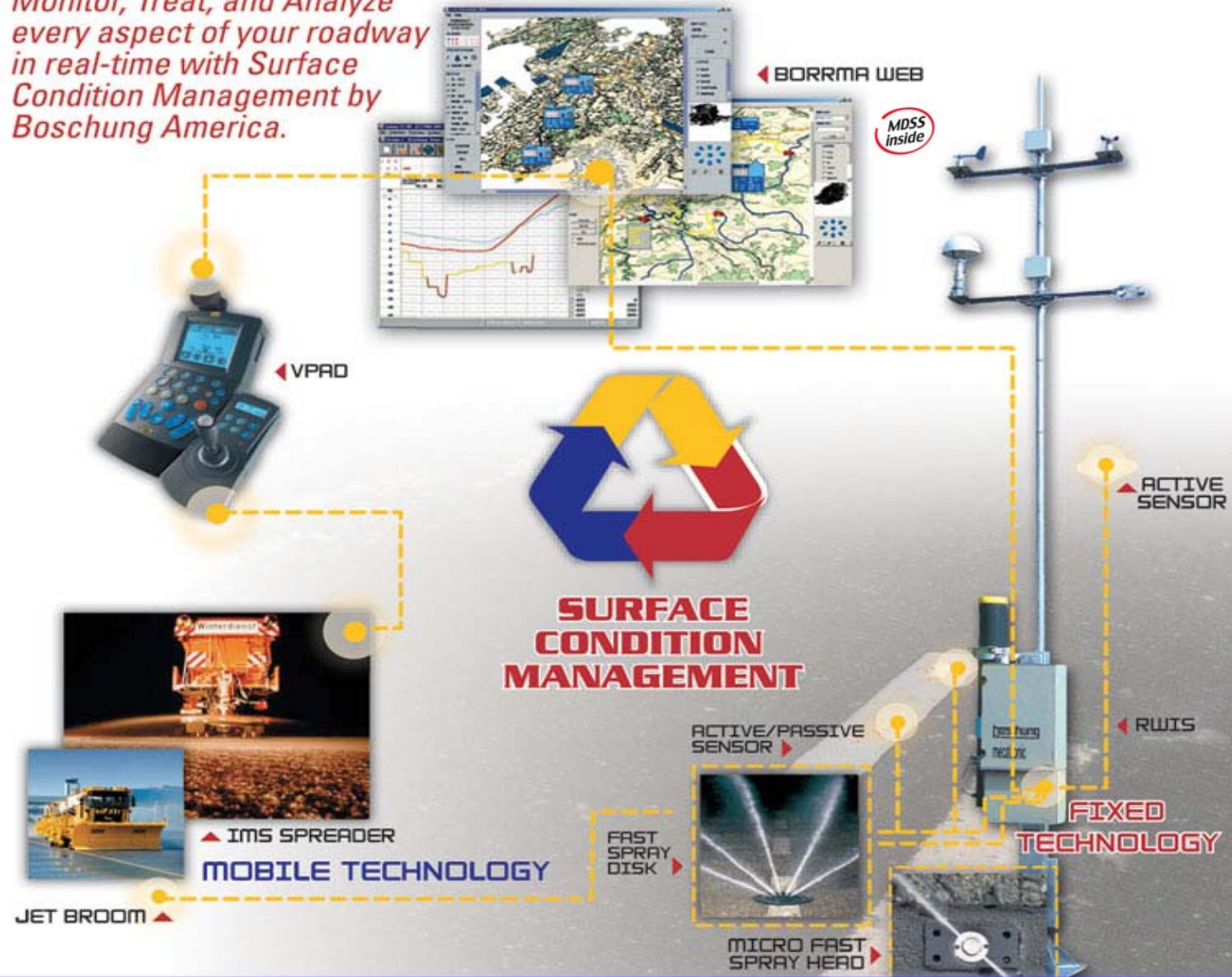


*Monitor, Treat, and Analyze every aspect of your roadway in real-time with Surface Condition Management by Boschung America.*



# *True* MDSS

**True MDSS can be defined as an MDSS package that incorporates all the elements of winter “Surface Condition Management”**

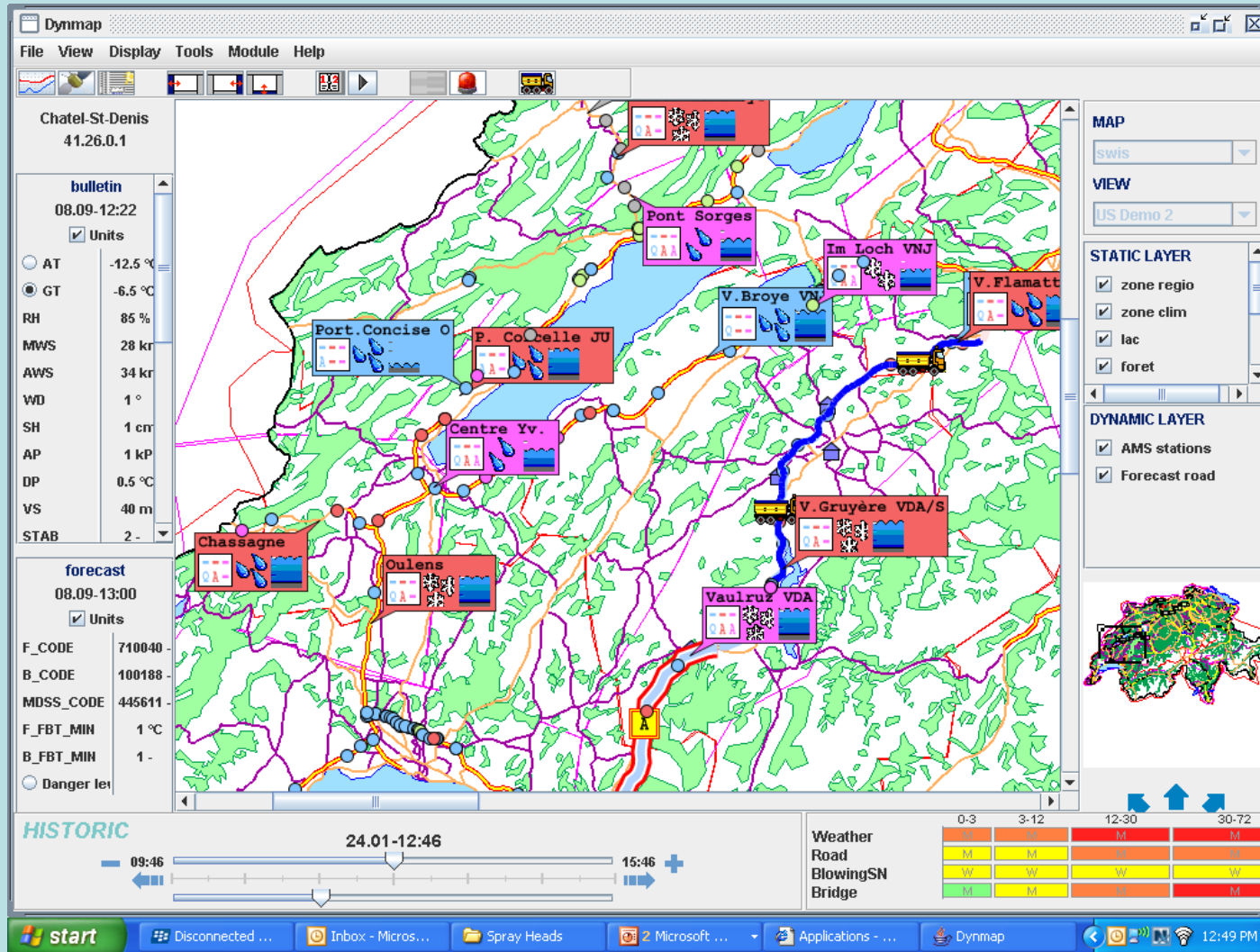
- Weather Forecasting
- RWIS and other highway information
- Vehicle feedback
  - Road temperature
  - Road condition
  - Spreading information
  - Plow information
  - Other?
- Forecasted road section
- Treatment input/treatment recommendations



# True MDSS - Today's Problem



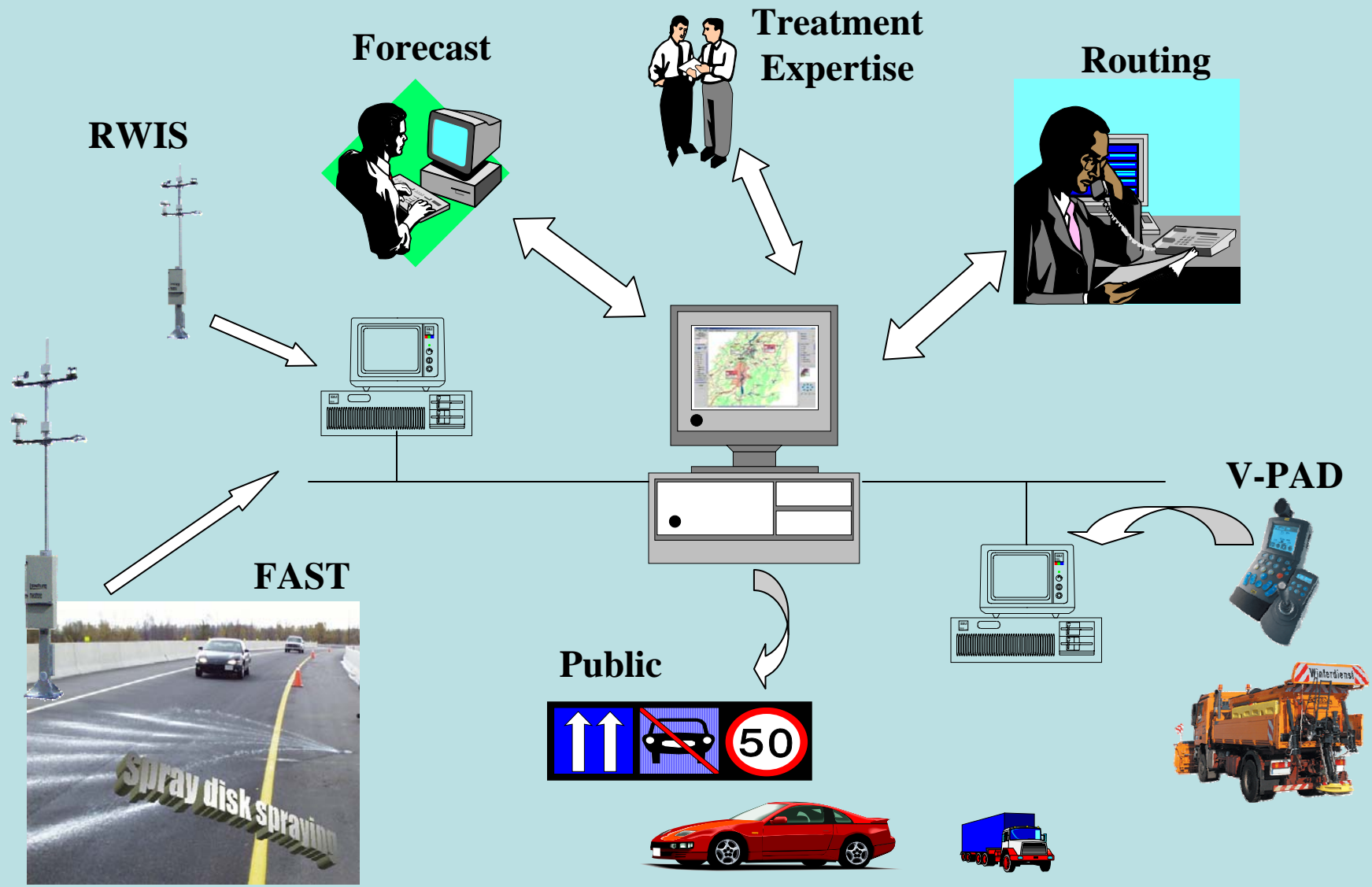
# The one *True* solution is:



# ***BORRMA-web***



# True MDSS – Boschung integrated Solution



# *True* MDSS Reality !

- True MDSS is a big task
- Can be implemented in pieces, using current and available equipment
  - Select software
    - Add vehicles
    - Add RWIS
    - Add Forecast- weather/road
    - Add treatment recommendations
- Seamless integration is critical
- Like components designed for like goal



**Dynmap** File View Display Tools Module Help

Chatel-St-Denis 41.26.0.1

**bulletin**  
08.09-12:22  
 Units

- AT -12.5 °C
- GT -6.5 °C
- RH 85 %
- MWS 28 kr
- AWS 34 kr
- WD 1 °
- SH 1 cm
- AP 1 kP
- DP 0.5 °C
- VS 40 m
- STAB 2-

**forecast**  
08.09-13:00  
 Units

- F\_CODE 710040
- B\_CODE 100188
- MDSS\_CODE 445611
- F\_FBT\_MIN 1 °C
- B\_FBT\_MIN 1-
- Danger level

**MAP**  
swis

**VIEW**  
US Demo 2

**STATIC LAYER**

- zone regio
- zone clim
- lac
- foret

**DYNAMIC LAYER**

- AMS stations
- Forecast road

**HISTORIC**  
24.01-12:46  
09:46 15:46

0-3	3-12	12-30	30-72
M	M	M	M
M	M	M	M
W	W	W	W
M	M	M	M

Weather  
Road  
BlowingSN  
Bridge

start Disconnected ... Inbox - Micros... Spray Heads 2 Microsoft ... Applications - ... Dynmap 12:49 PM