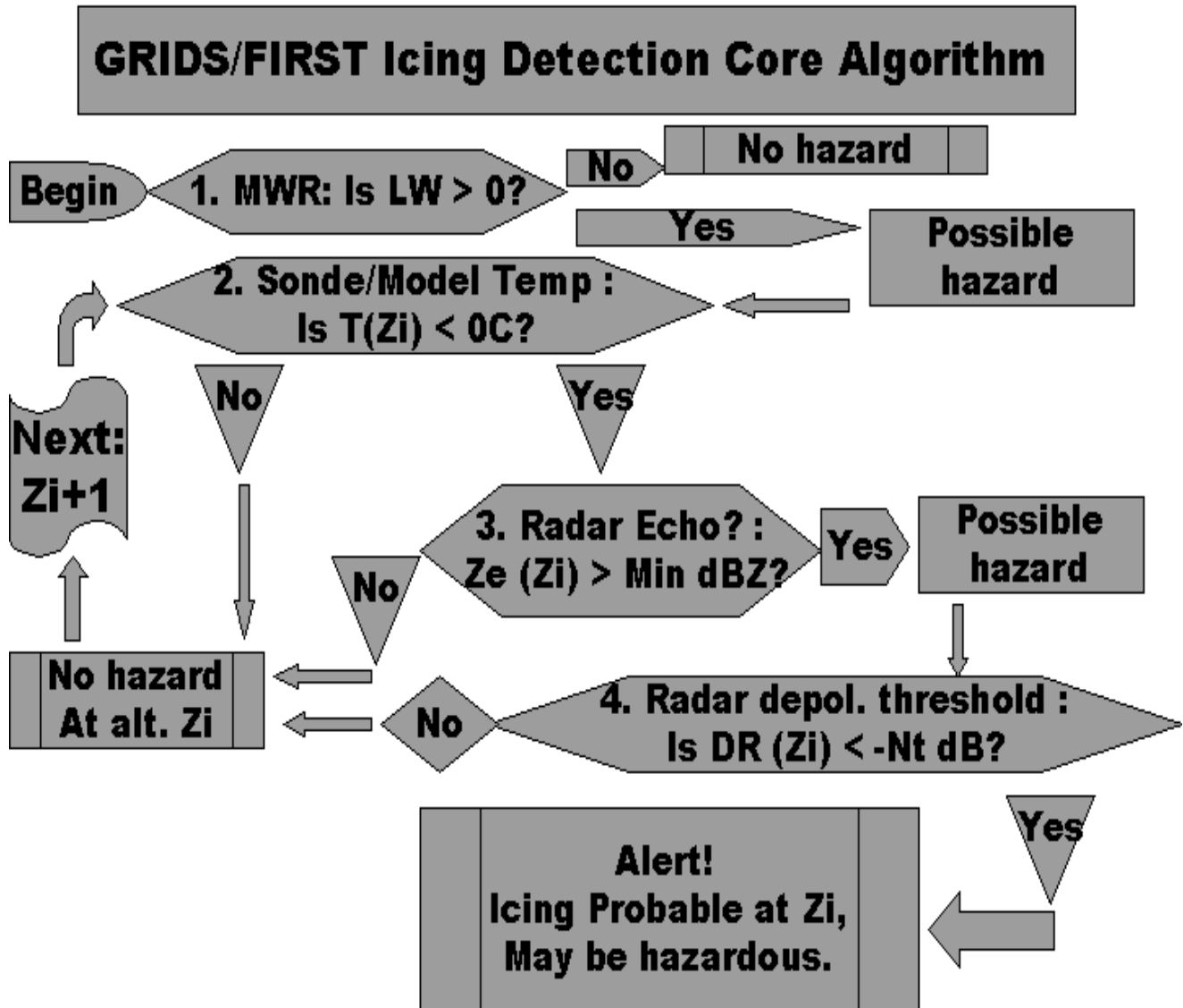


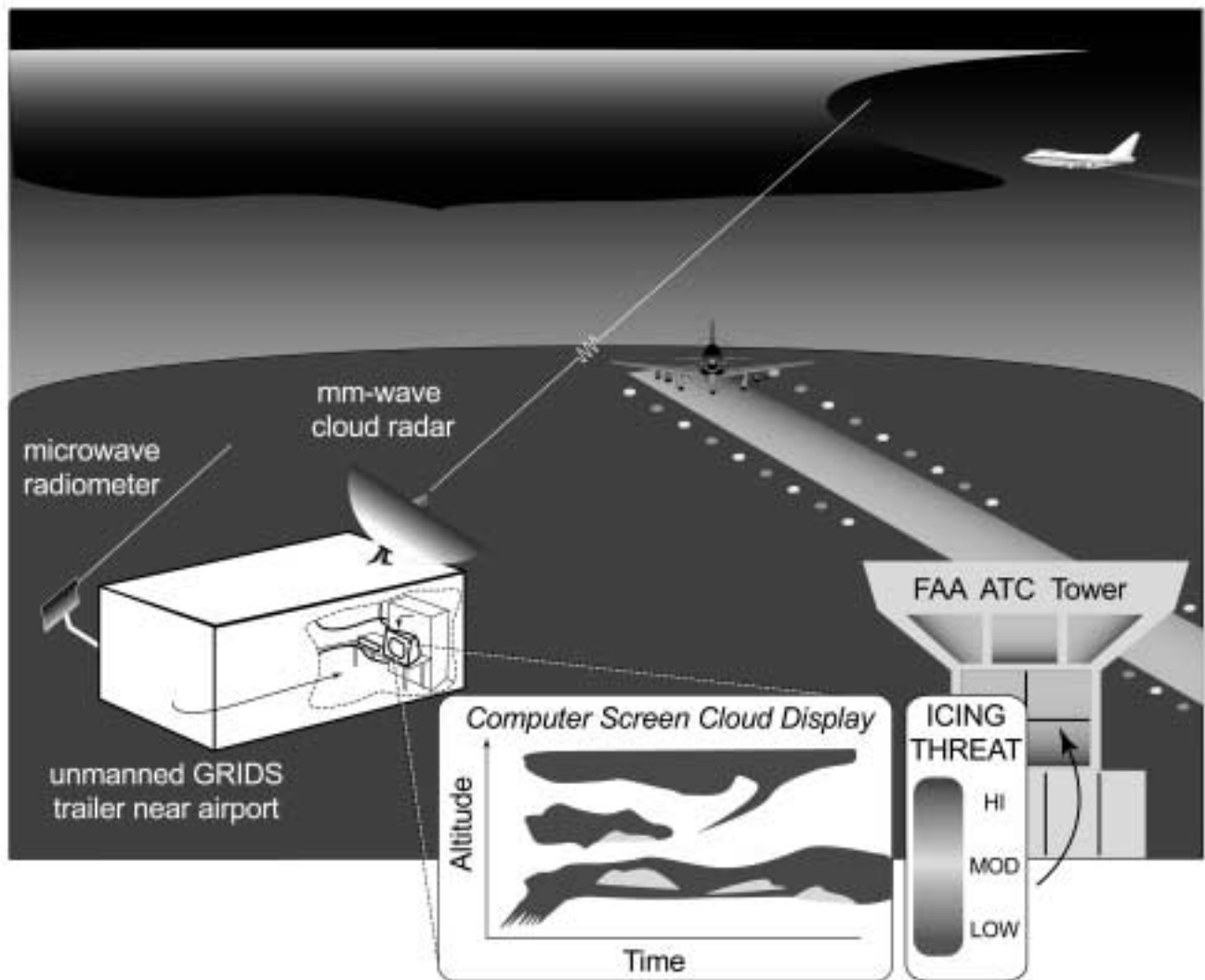
GRIDS

**Ground-based Remote Icing
Detection System**

GRIDS



GRIDS



449 MHz Wind Profiling Radars with RASS



Winds

Turbulence

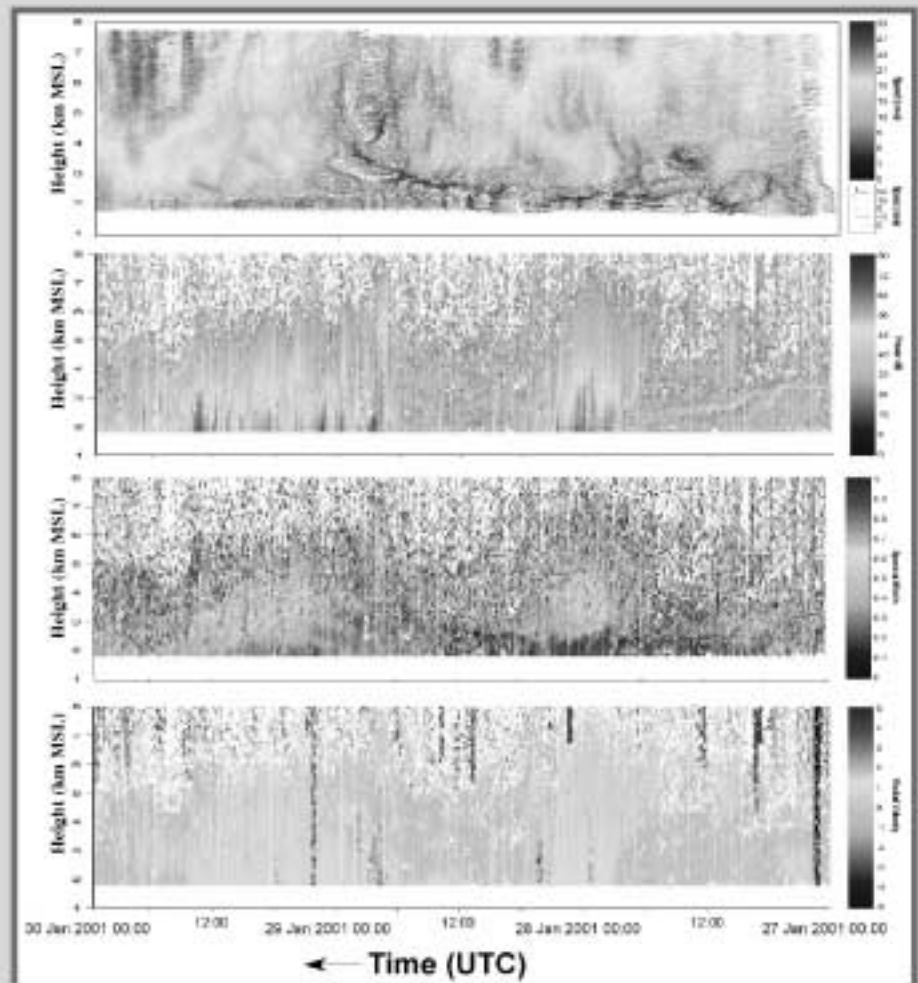
Temperature

Humidity

Moist air influx

Tornadoes

Hurricanes



Surveillance



- **Future...**

- **Cloud Radar**

 - Dual-polarization**

 - mixed precipitation**

- **Wind Profiler Networks**

 - Model input of new parameters**

 - melting layer**

 - vertical velocities**

 - humidity profiles**