

Questions to consider in the following discussion

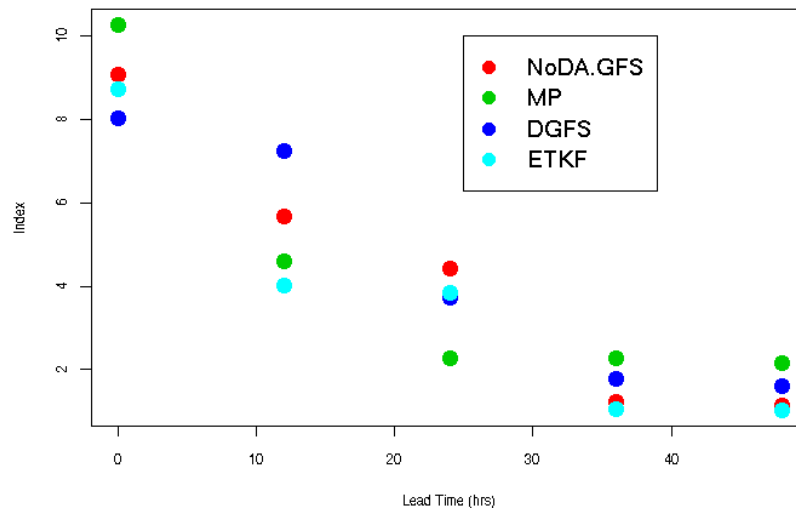
- What methods and approaches are a priority for inclusion in DTC verification capabilities?
- What methods and approaches are *ready* for implementation?
- What methods and approaches will be feasible for implementation in the future?
- What capabilities are feasible to consider running "operationally" - e.g., for near-real-time evaluations, or evaluations across a large set of cases?
- (What further research is needed to develop capabilities in this area that can be implemented in the DTC?

Statistical inference - Inference about a population from a random sample

- How close is the sample climatology to population climatology
- Effects of sample size on verification techniques (also consider number of ensemble members, number of cases, scale?)
- Independence of samples.

More issues

- Confidence intervals
- Multiple comparisons and multiplicity
 - Meta-analysis, methods for combining p-values, false discover rates.
- Scores with respect to time?



- Bootstrap
- Statistical Process Control
 - In a real time system, can we provide people with information about when action is needed.
 - Process Control Charts? Keep people from trying to reduce a forecast's variation below a process's natural variation?